



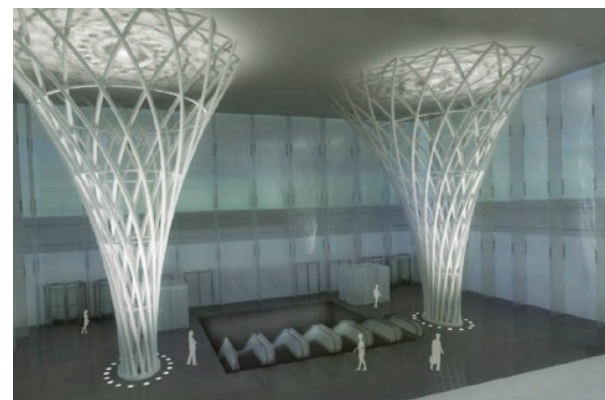
Award of
EXCELLENCE

The Pavilion at Brookfield Place

New York, NY

Kugler Ning Lighting Design

Jerry Kugler, Jackson Ning, Sunhee Lim, Jung Eun Ra



The pavilion is a grand new entrance through which 35,000 commuters and visitors travel daily into Brookfield Place (formerly known as the World Financial Center). The sweeping form of a pair of 53-foot-tall structural columns is illuminated with a series of metal halide in-ground fixtures. Shadows of the columns are cast onto the ceiling, creating the illusion of even greater volume and movement. Downlights, recessed at the perimeter of the ceiling, provide additional illumination when daylight is insufficient. Fixtures were selected with lens assemblies that minimize lamp heat transfer. Internal custom louvers were developed that optimize light output while controlling glare. Consisting of only energy-efficient CMH lamps, total lighting load is 58% below ASHRAE. At night, the pavilion becomes a glowing beacon.

ARCHITECTS
 Pelli Clarke Pelli Architects
Rafael Pelli, FAIA
Craig Copeland, AIA
Spector Group
Scott Spector, AIA
Scott Hayden, RA

OWNER
 Brookfield Properties

PHOTOGRAPHY
 Esto, Jeff Goldberg
 Pelli Clarke Pelli Architects
 Craig Hoeksema

“The Pavilion soars with the uplighting of the basket columns, welcoming residents, workers and visitors with its warm glow rising, from the city street upward, weaving with expressive structure to define the grand entry canopy of Brookfield Place and Battery Park City.”
 —Craig Copeland

“There’s something very rewarding about awarding simplicity.”
 —Lumen Awards Jury