

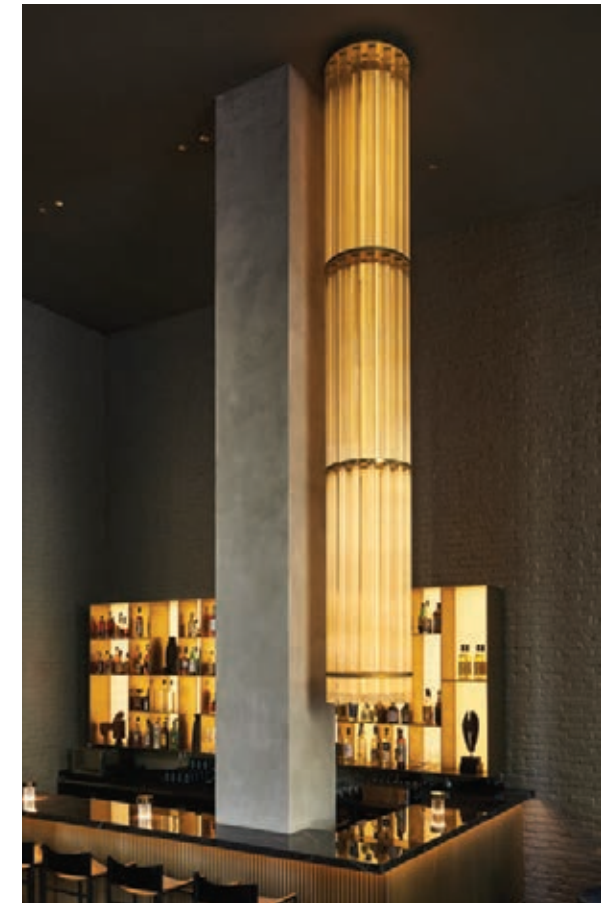
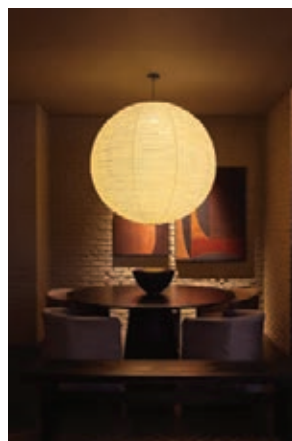
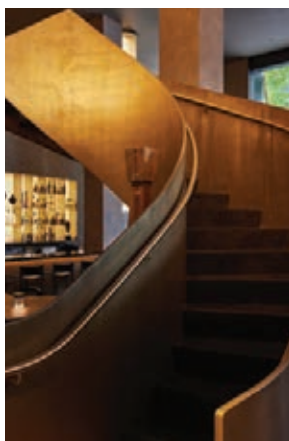
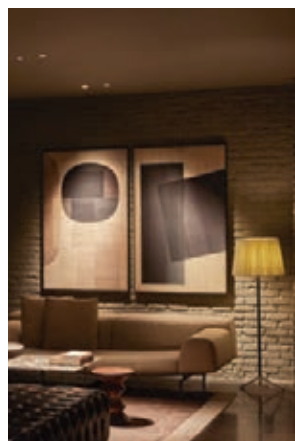


# Award of MERIT

Hotel AKA NoMad  
New York, NY

Studio Atomic

Gabriele Negro, Paola Pietrantoni, Julieta Hernandez Quijas, and Ruyao Wei



Positioned at a vibrant intersection within the dynamic NoMad district of New York City, Hotel AKA breathes new life into a historic, 1930s structure. The lighting design unfolds, seamlessly integrated into the minimalist architecture, with subtle influences from Japanese and Scandinavian traditions.

The interplay of light and shadow transitions from rich dark textures to carefully curated spotlighted moments. This chiaroscuro effect guides visitors from the entrance into the bar area, culminating in the reception lobby lounge.

Visible from the exterior an illuminated floating shoji wall spans the space, lending a gentle and welcoming radiance. This shoji wall flows through the mezzanine restaurant, creating an intimate ambiance.

The backlit bar is marked by a towering chandelier, which accentuates the verticality of the double-height space. The chandelier's layers of fluted and textured glass su use a warm glow throughout the room. To complement, oversized, Japanese-inspired pendants adorn the meeting tables.

Note the glint of light on the curving bronze stair. Several mock-ups ensured consistent lighting effects throughout, taking into account the varying ceiling heights within the same space.

Disused lighting and precise dimming soften the interior experience: a peaceful escape from the city's energy.

## ARCHITECTS

Lissoni Architecture New York  
Stefano Giussani  
Stephanie Rieger  
Christine Napoli

## Sawicki Tarella Architecture + Design

Joseph Tarella  
Edward Bowser

## OWNER

Korman Communities  
Larry Korman, Co-CEO

## OWNER'S PROJECT MANAGER

Alex Henry

## CLIENT'S REPRESENTATIVE

David Fields

## CUSTOM CHANDELIER DESIGN

Axon Design Inc., Kacper Dolatowski

## ELECTRICAL ENGINEER

Holstein White Inc.

## PHOTOGRAPHY

Jonathan Hekklo (Interior)  
Jeffrey Totaro (Facade)